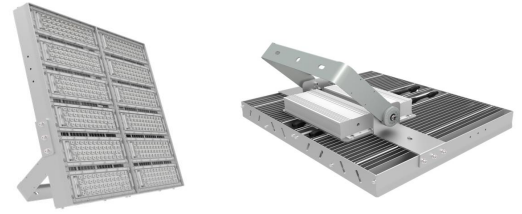


Lumiway 3

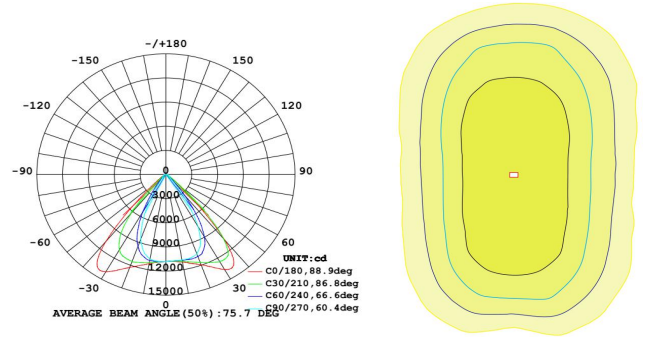
600W LED High mast Light Specification



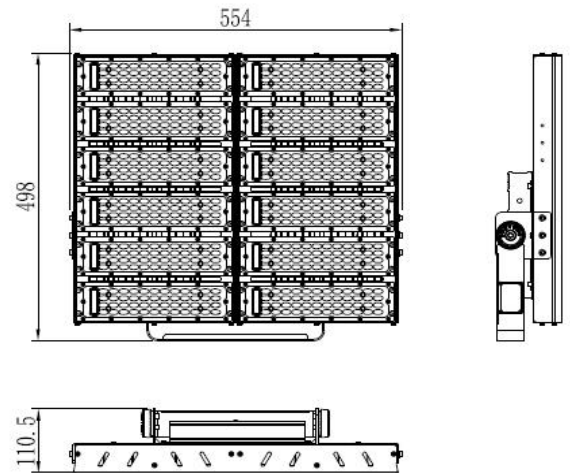
Parameters

Product Model	YHL-PO3-600
LED Chip Brand	Nichia
Light Efficiency	120lm/W
Luminous Flux	72000lm
Color Temperature	4500 ~ 5500K(2500 ~ 5500K optional)
Beam Angle	60°90° (30°、15°optional)
Total Power Consumption	600W±20W
Output Current	11.6A(Constant Current)
Output Voltage	DC 40 ~ 48V
Net Weight	14.0kg±0.4kg
Light Dimensions	L554mm×W498mm×H110.5mm
Light Package Dimensions	L640mm×W585mm×H185mm

Light Distribution



Physical Dimensions



≥0.95	75 Ra	IP65	≥100000 Hrs	AC 100-277V	47-63Hz
Power Factor	CRI	IP Level	TM-21(L ₇₀)	Input Voltage	Power Frequency

Others

Power Efficiency	Working Temperature (Environment)	Heat Sink Surface Temperature
>93%	-40°C ~ +55°C	55°C (Room Temperature30°C)
Fixture Efficiency	Working Humidity (Environment)	Luminaire Base Temperature
≥90%	15% ~ 90%RH	68°C (Room Temperature30°C)
Total Harmonic Distortion	Storing Condition	LED Power Consumption
≤15%	-40°C ~ +65°C	567W±20W

Suitable for Parking lot , Mansion outdoor scene, Gas station, Stadium and Other Lighting Purposes