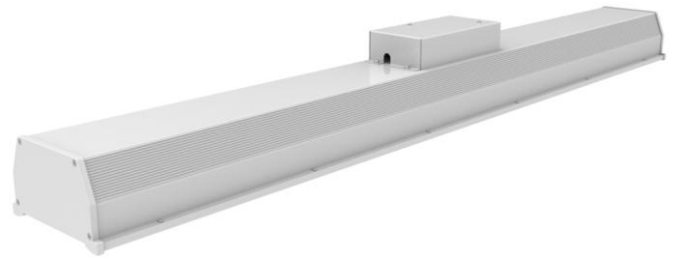


# Luna-Lite

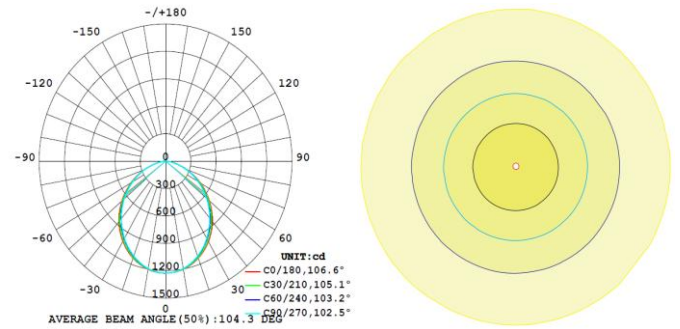
## 22W LED Linear Panel Light Specification



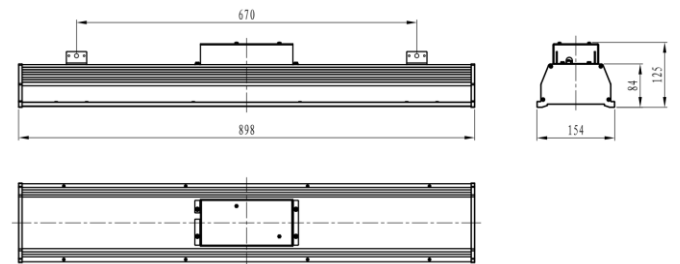
### Parameters

<b>Product Model</b>	YHL-PL2-22
<b>LED Chip Brand</b>	Nichia
<b>Light Efficiency</b>	≥105 lm/W
<b>Luminous Flux</b>	>2350 lm
<b>Color Temperature</b>	4500 ~ 5500K(2500 ~ 5500K optional)
<b>Beam Angle</b>	104°
<b>Total Power Consumption</b>	22W±3W
<b>Output Current</b>	560mA ( constant current )
<b>Output Voltage</b>	DC 30 ~ 40V
<b>Net Weight</b>	3.7kg±0.2kg
<b>Light Dimensions</b>	L898mm×W154mm×H125mm
<b>Light Package Dimensions</b>	L1100mm×W170mm×H145mm

### Light Distribution



### Physical Dimensions



≥0.95	80 Ra	IP41	≥100000 Hrs	AC 90-264V	47-63Hz
Power Factor	CRI	IP Level	TM-21(L <sub>70</sub> )	Input Voltage	Power Frequency

### Others

<b>Power Efficiency</b>	<b>Working Temperature (Environment)</b>	<b>Heat Sink Surface Temperature</b>
≥86%	-40°C ~ +50°C	35°C (room temperature 30°C)
<b>Fixture Efficiency</b>	<b>Working Humidity (Environment)</b>	<b>Luminaire Base Temperature</b>
≥90%	15% ~ 90%RH	51°C (room temperature 30°C)
<b>Total Harmonic Distortion</b>	<b>Storing Condition</b>	<b>LED Power Consumption</b>
≤7%	-40°C ~ +65°C	19W±3W

Suitable for Shopping malls, metro, supermarkets, hotels, offices, conference rooms, department stores, exhibition center, villas and other indoor lighting.