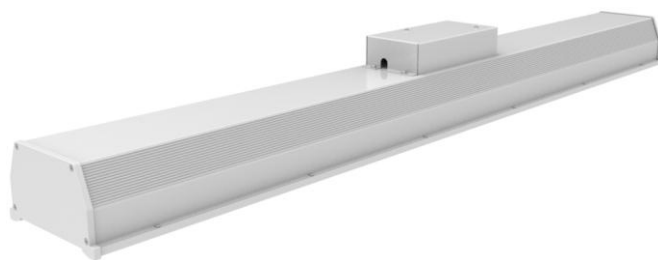


Luna-Lite

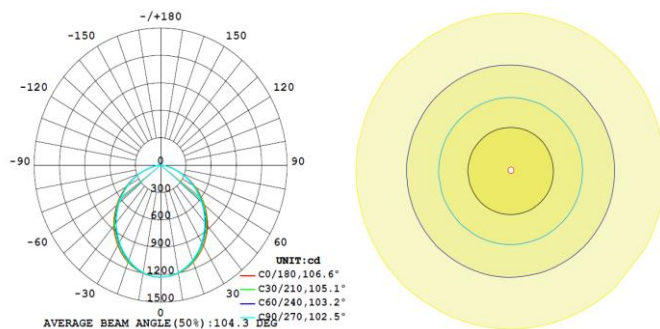
40W LED Linear Panel Light Specification



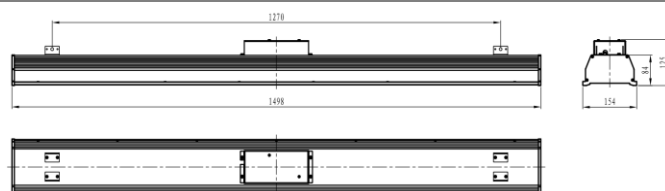
Parameters

Product Model	YHL-PL2-40
LED Chip Brand	Nichia
Light Efficiency	≥105 lm/W
Luminous Flux	>4200 lm
Color Temperature	4500 ~ 5500K(2500 ~ 5500K optional)
Beam Angle	104°
Total Power Consumption	40W±3W
Output Current	980mA (constant current)
Output Voltage	DC 30 ~ 40V
Net Weight	5.5kg±0.2kg
Light Dimensions	L1498mm×W154mm×H125mm
Light Package Dimensions	L1700mm×W170mm×H145mm

Light Distribution



Physical Dimensions



≥0.95	80 Ra	IP41	≥100000 Hrs	AC 90-264V	47-63Hz
Power Factor	CRI	IP Level	TM-21(L70)	Input Voltage	Power Frequency

Others

Power Efficiency	Working Temperature (Environment)	Heat Sink Surface Temperature
≥87%	-40°C ~ +50°C	35°C (room temperature 30°C)
Fixture Efficiency	Working Humidity (Environment)	Luminaire Base Temperature
≥90%	15% ~ 90%RH	50°C (room temperature 30°C)
Total Harmonic Distortion	Storing Condition	LED Power Consumption
≤7%	-40°C ~ +65°C	35W±3W

Suitable for Shopping malls, metro, supermarkets, hotels, offices, conference rooms, department stores, exhibition center, villas and other indoor lighting.